

Worcester Classic Spares

Unit K, Broomhall Business Centre, Broomhall Lane, Worcester, WR5 2NT

www.worcesterclassicsparses.com

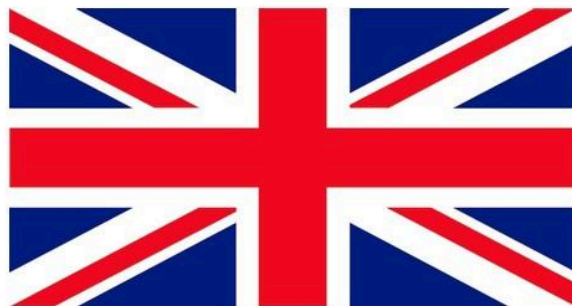
info@worcesterclassicsparses.com



SS & Mk 4

Parts List

01905
821569



Open
Monday -Friday
1pm - 5pm

Dear Customer,

This price list outlines all the parts we can supply for the Jaguar Mk 4 and SS cars. These parts are mostly new reproduction. We try to hold as many parts in stock as possible, but some items are bought to order. If there is an item you require that is not listed, please let us know and we will make every effort to locate it for you and may be able to supply a used original part from our large selection.

Orders can be placed by WhatsApp, email or over the phone, when ordering please state our reference numbers (which appear on the far left of the page) and **provide details of your car – the make, year, chassis and engine numbers, body style and whether it is right or left hand drive**. If you are aware that the car has been modified or fitted with non-original parts please let us know as, unless notified, we will assume it is as original.

PRICES

The prices quoted are **per item** unless otherwise stated and are all in GBP. Whilst every effort will be made to adhere to the prices shown, we do reserve the right to make changes if necessary without prior notice. Any such change will be made known to the customer before sending out the order.

Please note the prices shown DO NOT include VAT - this will be added to orders for UK customers.

Payment can be made by debit or credit card (we are licensed to accept Switch, Visa and MasterCard) or by bank transfer. We also accept Paypal for orders of £100 or less.

SHIPPING/POSTAGE

Parts can be shipped to any part of the world using post or carriers on a door-to-door service - please see our terms and conditions. For small UK orders we used a tracked Royal Mail service. For larger UK orders, and all shipments going abroad, we use a variety of couriers using the company World Options.

Please note customers from the EU (and other countries) will need to pay customs/import duties when their parcel arrives in their own country. We are not involved in this - the courier should send the appropriate information and links via email.

WEBSITE

There are photos of most of the parts in this price list on our website, along with original items and Jaguar literature. The lists are updated regularly (but only printed twice a year) so please see the website for the most up to date list.

We are using Facebook now as well - please see items on the 'Mk IV Lovers' or 'SS & Jaguar Cars to 1951' pages

STAFFING

WCS continues to be a family run business. Michael has now 'semi-retired' and works for the business on three days a week - Wednesday to Friday. I continue to be in the office from 1pm to 5pm each weekday (I have another job as a primary school teacher in the mornings!). If you have a technical enquiry that needs Michael's expertise, please ring the office and ask for a call back.

Anna Whitworth

Please note all prices are plus VAT for UK customers

CHROME FITTINGS



CF. 18		"T" Shaped Boot handle - MK IV with Lock barrel & key Escutcheon not included.	£103.45
CF. 21	1745	WING DIVIDER - Mk 4 only	£145
CF. 27	BD.573	HINGE for cubbybox lid on dashboard - unused original	£16.50 pair
CF. 28	C1026	"WASHER at top of dust cover" for chrome telescopic dust cover below steering wheel. 2.5 & 3.5L Saloon (NOT 1.5L) SS100	£22.50
CF. 38	BD.109	HINGE for toolbox 3 per car	£41.30 each
CF. 39	BD.6206	LEAPING JAGUAR MASCOT	£176.75
CF. 40		Chrome screw for 'D' light	£11.20 pair
CF. 41	1985, 1376	BONNET CATCH - reproduction Fits some Mk 4 & SS saloons, SS100 2.5L (chassis 49041 & subsequent) & SS100 3.5L (chassis 39061 & subsequent). Please note: there are anomalies in the Parts Books regarding this item, please check that it is suitable for your car.	£74.20
CF. 84	BD.603	BOOT HANDLE AND ESCUTCHEON - lock barrel <u>not</u> included	£141
CF.108	BD.72	LUGGAGE STRAP BRACKET/STAPLE - 4 per car	£41.50
CF.113	252	RADIATOR CAP and sealing ring- drilled to take Leaping Jaguar mascot - 1936-40 & Mk.IV	£92.50
CF.114	252	RADIATOR CAP and sealing ring - not drilled for mascot	£92.50
CF.117	C.341	DOME NUT on cylinder head - 3.5L 1938 onwards 7 per car	£8.50 each £59.50 set of 7
CF.118	C.580	DOME NUT on cylinder head - 2.5L 1938 onwards 12 per car	£8.50 each £102 set of 12
CF.118A	C.580	DOME NUT on cylinder head - 1.5L 1938 onwards 8 per car	£8.50 each £68 set of 8
CF.119	C.412	DOME NUT on rocker cover - 40, SS100 & 2.5/3.5L 1938 onwards - all have 3 per car. - 1.5L 1938 onwards - 2 per car	£5.90 each

Please note all prices are plus VAT for UK customers

CF.126	BD.6	INTERIOR DOOR HANDLE - 1936-40, Mk.IV saloon and coupe	£72.50
CF.132		BONNET CENTRE HINGE - also fits SS 1936-40 (NOTE: may require shortening for some SS models) Length: 1270mm/50"	£92.20
CF.135	2039/ 2040	TRIM SPEARS for Mk 4 DHC	£228.25
CF.137	"C2757"	SCREW for T-shaped knob for light switch on dashboard. Also fits XK120. For the knob see CF142	£15.75
CF.138	2312	ROUND ESCUTCHEON for budget lock on spare wheel compartment	£16 each
CF.142	"C2757"	T-SHAPED KNOB for light switch on dashboard Screw also available, see CF137	£27.50
CF.143	12170, 1723	HANDLE operating front 1/4-light (ventilator) - supplied with escutcheon but without circlip and washer.	£88.10
CF.144		EXTERIOR DOOR HANDLE - please state locking/non-locking Locking handles come with a FS lock barrel fitted and two keys	£86.90 non-locking £117.50 locking
CF.145	BD.552	HANDLE operating window regulator - 1936-40 & Mk.IV	£54.45
CF.146	BD131/ BD.132	TRIM SPEAR at end of waistline moulding – saloon	£98.20 pair
CF.147	BD.133/ BD.134	BULKHEAD TRIM	£69.35 pair
CF.149	BD.143/1 BD.143/2	DOOR PILLAR TRIM 1938-1948 cars	£25.90
CF.150	2310/1	DOVE-TAIL STRIKER for door lock. (state left or right)	£80.10
CF.157		FRONT WINDSCREEN CHROME SIDE CLAMP HANDLES AND BRACKETS – These allow the windscreen to be fastened in the closed position or secured in the open position. SS.1936-40 and Mk.4	£152.25 car set
CF.159	BD691	HANDLE OPERATING SUNROOF Mk 4 & SS 1938 onwards	£49.10
CF.160	BD.2190	TUBULAR SCREW – securing sunroof handle	£12.35
CF.167	C1988	REAR BUMPER 'J' PLAQUE for 2.5/3.5L (not 1.5L)	£115

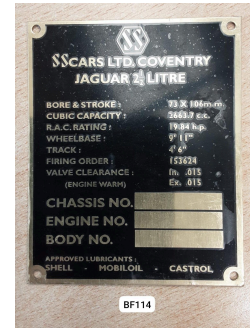
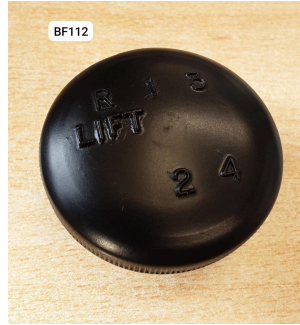
Please note all prices are plus VAT for UK customers

BODY FITTINGS



BF. 31	BD.542/3	OVAL WASHER - 0.25" hole	£ 0.45
BF. 60		Special T-BOLT + nut & 2 washers – securing chrome mouldings to bonnet. 16 per car	£2.10 each
BF. 64	1524	FRONT SUPPORT - brass - for bonnet hinge	£16.70
BF. 65	BD.1953	REAR SUPPORT - brass - for bonnet hinge	£16.70
BF. 30	1377	BRACKET/HINGE FOR SUNVISORS 1.5L - chassis number 410001 & subsequent. 2.5 & 3.5L - fits all cars	£165 each 2 per car
BF. 73	580736/ 580733	EXTERIOR MIRROR	£75 pair
BF. 74	BD.813	PIPING between wings and body - black plastic - car set	£35.15 set
BF. 76		FLAT WOVEN TAPE around radiator grille	£16.20
BF. 92		WINDSCREEN WIPER BLADE with rubber fixing peg	£30 pair
BF. 93		RUBBER PEG for wiper blade	£3.10 pair
BF .94	BD.655	GLASS for backlight/rear window. 1.5L/2.5L/3.5L 1938 onwards and Mk4	£51.30
BF. 98		WIPER ARM	£71.80 pair
BF.112		GEAR LEVER KNOB - this is a new reproduction item - fits all models with a DOUBLE HELICAL gear box: SS1, SS2, SS, SS100 & Mk 4. Thread is 5/16 UNC	£57.45
BF.113		GEAR LEVER KNOB – this is a reproduction item – fits the LATE Jaguar Mk.4 with the SINGLE HELICAL gear box.	£57.45
BF.114		IDENTIFICATION PLATE available for the SS 2.5L	£67.95
BF.119		IDENTIFICATION PLATE & LUBRICATION PLATE - Mk.IV 1.5L - new reproduction	£91.95 pair
BF.120		IDENTIFICATION PLATE & LUBRICATION PLATE - Mk.IV 2.5L - new reproduction	£91.95 pair
BF.121		IDENTIFICATION PLATE & LUBRICATION PLATE - Mk.IV 3.5L - new reproduction	£91.95 pair
BF.122	B1880	SILENTBLOC BUSH IN UPPER SUPPORT BRACKET - front bumper 3.5L 1938-47, 2.5L 1938-46	£110 pair

Please note all prices are plus VAT for UK customers



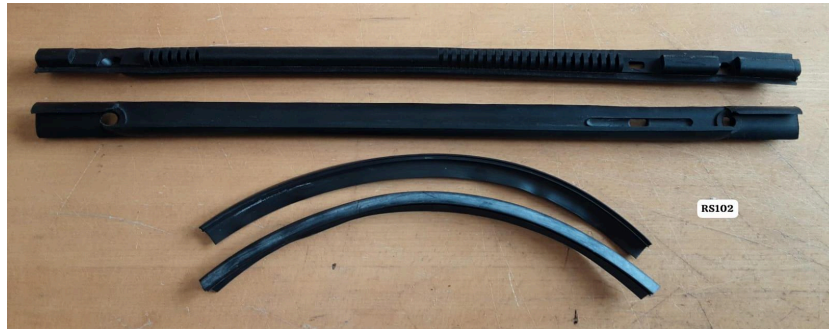
RUBBER SEALS



RS .8	BD1207	WINDSCREEN SEAL	£19.25
RS. 13	792	PEDAL PAD - brake and clutch For later Mk 4s	£9.50 pair
RS. 14	C3473	ACCELERATOR PAD for some later cars	£7.30
RS. 19	1048/A	PLUG for jack brackets - front and rear (4 per car)	£7.80 each
RS. 45	729423	WINDSCREEN WIPER WHEELBOX SPINDLE GROMMET Not for 1.5L 2.5L: chassis numbers 80001 - 80135, and 510001 & subsequent 3.5L: chassis numbers 90001 - 90068, and 610001 & subsequent	£12.50 pair
RS. 50	C1788	CONNECTING RING between intake pipe and air cleaner, 2.5 & 3.5L	£18.10
RS. 61	C.1915	BEARING/BUSH at bottom of gear lever Pair	£14.10 pair
RS. 69	814	STEERING COLUMN GROMMET - 2.5/3.5L RHD 1938 onwards and SS100	£19.70

Please note all prices are plus VAT for UK customers

RS. 81	663	SS100 REAR LAMP BRACKET GASKET	£8.75 pair
RS. 85	C.1550	STEERING COLUMN GROMMET - 2.5/3.5L LHD and 1.5L Chassis Nos. 410801 onwards LHD/RHD	£34.70
RS. 86	3204	GROMMET in spark plug cable bracket SS100 & Mk.4	£17.50
RS. 88	593	BONNET REST RUBBER on scuttle	£16.75
RS. 89	2263	RUBBER GROMMET for support rods/Landau bar 2 per car	£31.20 each
RS. 96	B.1791	BUFFER in cup - front bumper - also fits SS 1936-40	£11.15
RS. 98	255780	CAP - with embossed motif - on starter solenoid	£5.00
RS.101	BD.46/2	SEALING RUBBER around cover aperture - number plate box	£11.25
RS.102	BD46	FRONT QUARTER LIGHT SEALS SS 1936-1940 and Mk 4	£125 pair
RS.106	553	BONNET CORNER BUFFER/PROTECTOR (Set of 4)	£20.50 set
RS.111 A	2222	DOOR BUFFER - saloon. (8 per car)	£5.90 each
RS.114		RUBBER EXTRUSION in the chrome beading/strips on the boot floor and on the tool tray lid. 1.5L/2.5L/3.5L 1938 onwards	£19.70 car set
RS.115		RUBBER EXTRUSION in the chrome beading/strips on the front wings/runningboard. 1.5L/2.5L/3.5L 1938 onwards	£33.50 car set
RS119		RUBBER GEARBOX TUNNEL for SS and SS100 saloons and tourers. 1936-1940. Please note modification to the tunnel is needed for the SS100.	£285



Please note all prices are plus VAT for UK customers

ELECTRICAL



E. 3		"D" LIGHT GASKET (cork) – MKIV	£1.75
E. 5		"D" LENS - new reproduction (plastic)	£35.50
E. 14	404923	ROTOR 1937-40 3.5L engine number M1-M1600 (less 1-25) 2.5L engine number L1-L2055 (less 1-17)	£16.95
E. 17		INTERIOR LIGHT LENSES RHD 1.5L - chassis number 411001 and subsequent RHD 2.5L - chassis number 510167 and subsequent RHD 3.5L - chassis number 610186 and subsequent LHD 2.5L & 3.5L - all cars	£78 pair
E. 19	405468 same as 40051	ROTOR ARM for SS2, 1.5L 1936/37	£17.95
E. 23	407043	DISTRIBUTOR CAP - 2.5 & 3.5L and XK120. 2.5L - engine numbers 1-17 and P18 & subsequent. 3.5L - engine numbers 1-25 and S26 & subsequent. The cables enter the cap vertically, not horizontally as original. Can be used in place of 407279, 417178 & 415708	£35.85
E. 26	C1455	FUEL PUMP for 2.5/3.5 from 1936-1948, also fits SS. NOT suitable for 1.5L cars.	£128.50
E. 31	407030	ROTOR ARM	£7.35
E. 33	407044	CONDENSER for distributor, 2.5L Engine Nos. P.18 onwards, 3.5L Engine Nos. S.26 onwards	£12.00
E. 43	407050	CONTACT SET - also fits 1.5L Chassis Nos. 70001 onwards	£10.20
E. 44/B		BRUSHES for dynamo - 2.5L/3.5L 1938 – 48 Pair	£11.20
E. 60	400308	CONDENSER for distributor - 2.5L Engine Nos. L.1 - L.2055, 3.5L Engine Nos. M.1 - M.1600 onwards - also fits 1.5L Chassis Nos. 50001 - 53754 and SS100 NO LONGER AVAILABLE - PLEASE USE E33	£11.95
E. 70	1130	LUCAS FRONT SIDELIGHTS 1.5L, SS100 and some other SS models, e.g SS Tourer New reproduction (does NOT say 'King of the Road' on the dot)	£85 each
E. 71	"C4099"	FRONT SIDELIGHT The original bulb holder for this sidelight is within the sidelight pod on the front wing. This reproduction sidelight comes with a detachable bulb holder: the bulb is retained if the original is	£55.75 each

Please note all prices are plus VAT for UK customers

		unusable, but can be removed if the original is still in good condition. This bulb holder is designed to take a twin filament bulb. Please note the lens is plastic, not glass.	
E. 72	404520	DISTRIBUTOR CAP 2.5L - L1 to L2055 (less 1-17) 3.5L - M1 to M1600 (less 1-25)	When available, please enquire.
E. 73	407279	DISTRIBUTOR CAP 2.5L - engine numbers 1-17 & P18 onwards 3.5L - engine numbers 1-25 & S26 onwards	When available, please enquire.
E. 83	BD1804	TRAFFICATORS - Professionally reconditioned <u>LHD cars only</u> 2.5L DHC - chassis numbers 537020 & subsequent 3.5L DHC - chassis numbers 637164 & subsequent	£480 Exchange £580 Outright
E. 86	37082/A	CONNECTOR BLOCK - electrical wiring connector 2.5L - Chassis Nos .80001 - 80135 on and 510001 on (RHD), 530030 on and 537020 on(LHD); 3.5L - Chassis Nos. 90001 - 90068, 610001 on and 610001 on (RHD), 630184 on and 637164 on (LHD).	£26.00
E. 94	57124	RED REFLECTOR - 2" diameter, with chrome surround, bolt fixing. Not a Jaguar part but a 'period addition' to comply with law.	£25.45 pair
E. 99	315725	BRAKE/STOP LIGHT SWITCH 1.5/2.3/3.5L	£32.70
E.124		HT CABLE WIRE for spark plugs (comes as one length of wire)	£27.60
E 127	"C2528" "C8749"	IGNITION COIL with screw down fixings (not original Lucas sports coil)	£25.80
E.136	513	GROMMET in scuttle/bulkhead for water temperature/oil pressure pipes	£6.60
E.137	532949	LENS/WINDOW for boot/tool tray light	£15.25
E.143	532948	CHROME SURROUND for boot light at E.137	£11.40
E.144	"409635"	DISTRIBUTOR CAP for 1.5L, chassis nos: 70007-70688 and 410001 onwards. Please note: cables come out vertically, not horizontally as per the original.	£28.75
E.145	"400316"	DISTRIBUTOR CAP for 1.5L, chassis nos: 50001-53754. Please note: cables come out vertically, not horizontally as per the original.	£38.85
E.146	400415	CONTACT POINTS - 1.5L ch no: 50001-53754, 2.5L eng no L1-L2055 (less 1-17) 3.5L eng no M1-M1600 (less 1-25)	£12.75
E.160	405469 400052	ROTOR ARM - 1.5L 1938-48	£14.50
E.169		SPARK PLUGS – Please state full engine number if 2.5L	£5.95
E.300	SF55	TRAFFICATORS - Professionally reconditioned 1.5L - fits all cars 2.5L RHD - fits chassis no. 80001-80135 and 510001 & subsequent 2.5L LHD Saloon - fits chassis no. 530001 & subsequent 2.5L LHD DHC - fits chassis no. 537001-537019 3.5L RHD - fits chassis no. 90001-90068 and 610001 & subsequent 3.5L LHD Saloon - fits chassis no 630001 & subsequent 3.5L LHD DHC - fits chassis no 637001-637163	£600 pair

Complete wiring harnesses are available for Mk 4 & 5 - please ask.

Please note all prices are plus VAT for UK customers

CABLES

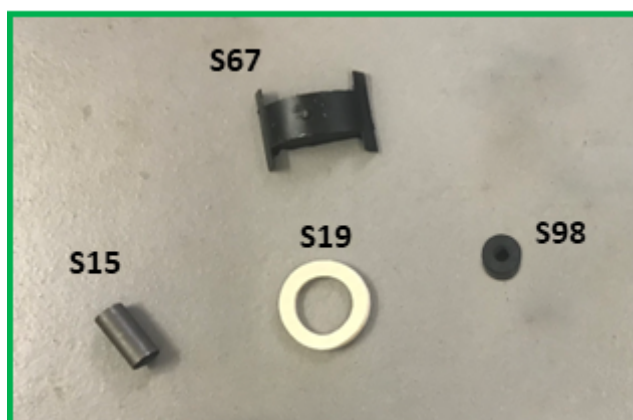
CB 10	C.1434	SPEEDOMETER CABLE 2.5 & 3.5L Also 1.5L IF chassis number 70001-70688 and 410001 and subsequent. 66.5 inches long	£34.80
CB 17	"SK5209 1/35"	REV COUNTER CABLE - 1,5L chassis numbers 70001-70688 and 410001-410412	£29.50
CB 18	"SK5209 1/34"	REV COUNTER CABLE - all 2.5 and 3.5L 1938-1948 (and 1.5L chassis number 410413 onwards) NOT suitable for SS100.	£29.50

BRAKES

BR.14		BRAKE LININGS & RIVETS - 2.5/3.5L 1946-1948	£67.90 axle set
BR.30		BRAKE LININGS & RIVETS - 2.5L 1936/37 Also 1937 SS100 2.5L & 1938 SS100 3.5L	£71.50 axle set
BR.31		BRAKE LININGS & RIVETS - 1.5L 1936 to 1949. Car set of 8.	£85 set
BR.62		BRAKE LININGS & RIVETS - 2.5L Front & rear 2.5L - 1937-1940 3.5L - 1938-1946	£68 axle set
BR.149	GA/G214 2	DUST COVER - brake back plate - front. Complete with metal plate riveted together. 1.5L 1938 onwards; SS100 and 2.5L/3.5L 1936-40.	£23.40
BR.150	GB2308	DUST COVER - brake back plate - rear. Cars as above.	£12.65
BR.151	GB3405 9	DUST COVER - front - brake back plate Mk 4 1940 onwards (NOT 1.5L)	£13.05
BR.152	GB1760 2	DUST COVER - rear - brake back plate Mk 4 1940 onwards (NOT 1.5L)	£11.85

Please note all prices are plus VAT for UK customers

SUSPENSION & STEERING



S4	1348	GAITER for rear bracket on front road spring 2.5/3.5L only CURRENTLY BEING REMADE	Not yet available
S. 15	C.1219' 14211	BUSH in eye of rear road spring and spring shackles - fits 1.5L/2.5L/3.5L 1938 onwards (6 per car)	£5.30 each
S. 19	C,615	FELT WASHER inside cover plate on front hubs - fits 2.5L/3.5L 1938 onwards (2 per car)	£2.80 each
S. 26	C3020	RUBBER GAITER for track rod end	£3.45
S. 54	C614	COVER PLATE over grease retainer	£12.75
S. 67	632	RUBBER BUFFER at top of rear axle check strap - 1.5L/2.5L/3.5L 1938 onwards (2 per car)	£17.60 each
S. 80	C1025	TELESCOPIC DUST COVER for steering column. Fits ALL 1.5L and 2.5/3.5L LHD only (NOT 2.5/3.5L RHD)	£37.50
S. 90	C.1932, C.1933	END OF TRACK ROD ASSEMBLY - track rod ends - 2.5/3.5L 1938 onwards	£69.80 pair
S. 91	C.1933, C.1934	END OF TUBE ASSEMBLY - steering connecting tube - 2.5/3.5L 1938 onwards	£69.80 pair
S. 92	C.1387	TRACK ROD END ASSEMBLY/CONNECTING TUBE END ASSEMBLY - 1.5L. (2 pairs per car)	£69.80 pair
S. 93		OIL for lever arm shock absorber	£28.50 per litre
S. 94	C.667	FRONT BUMP STOP BUFFER – 2.5L/3.5L No longer available , however we can supply the bump stop to bolt to your existing brackets.	£13.10 each bump stop only
S. 95	C.683	REAR AXLE BUFFER – 1.5L/2.5L/3.5L	£52.15 pair
S. 98		BUSHES FOR SHOCK ABSORBER LINK ARMS 8 per car	£8.70 each
S. 99	C575	FRONT WHEEL BEARINGS - OUTER	£240 each
S.100	C612	FRONT WHEEL BEARINGS - INNER	£230 each

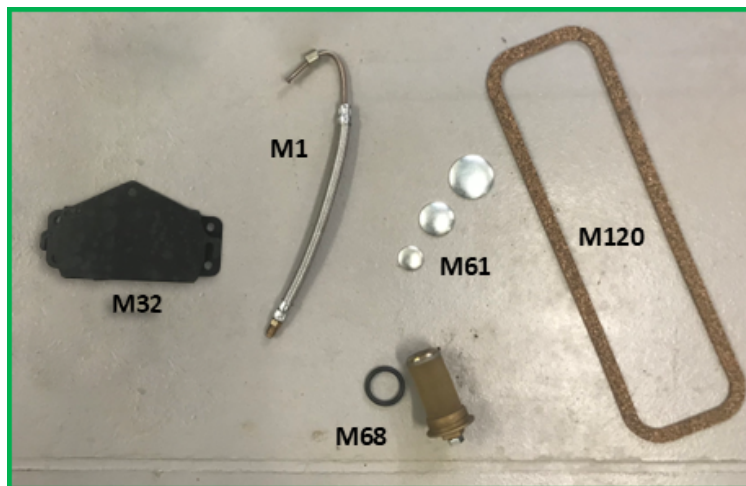
Please note all prices are plus VAT for UK customers

CLUTCH

(All surcharges are refundable upon receipt of the old unit)

C. 11		CLUTCH PRESSURE PLATE - 10" - 3.5L 1938 onwards (inc SS100) EXCHANGE SURCHARGE	£125 £80
C. 12		FRICITION PLATE - 10" - 3.5L 1938 onwards (inc SS100) EXCHANGE SURCHARGE	£62 £40
C. 13		RELEASE BEARING - 1.5L 1947-49, 2.5L/3.5L 1936 onwards	£35
C. 14		CLUTCH PRESSURE PLATE - 9" 1.5L 1947-49, 2.5L 1936 on Also fits SS100	EXCHANGE SURCHARGE £125 £80
C. 15		FRICITION PLATE - 9" 2.5L 1936-1951 Also fits SS100	EXCHANGE SURCHARGE £62 £40

ENGINE



M. 1		FLEXIBLE OIL PIPE from oil cleaner to pressure gauge	£24.95
M. 5	C.407	ENGINE STABILISER MOUNT	£10.65
M. 6	C.428/429 Also 43880	FRONT ENGINE MOUNT - 1.5L/2.5L/3.5L 1937 onwards 2 per car	£18.35 each
M. 19	C1260	GASKET/WASHER between fuel pump body and engine, 1.5L only	£3.95
M. 21		SS MANIFOLD GASKETS SS1 16 & 20HP (side valve) 1934-1936	£43.50 pair
M. 25		FANBELT 1.5L 1936/1937	£24.50
M. 29	310	CARBURETTOR RETURN SPRING - 2.5/3/5L 1938 onwards	£3.45
M. 32	C.478	GEARBOX MOUNT - 2.5/3.5L 1938 onwards	£29.80
M. 40	C.419	WASHER/FIBRE GASKET on oil filler	£3.90
M. 42	C.1614	DUAL TIMING CHAIN - 2.5L RHD Engine Nos. P.201 on, 3.5L RHD Engine Nos. S.201 on, all LHD cars, also fits SS100	£25.60
M. 47	C1145	1.5L GASKET FOR WATER UPTAKE MANIFOLD	£11.50

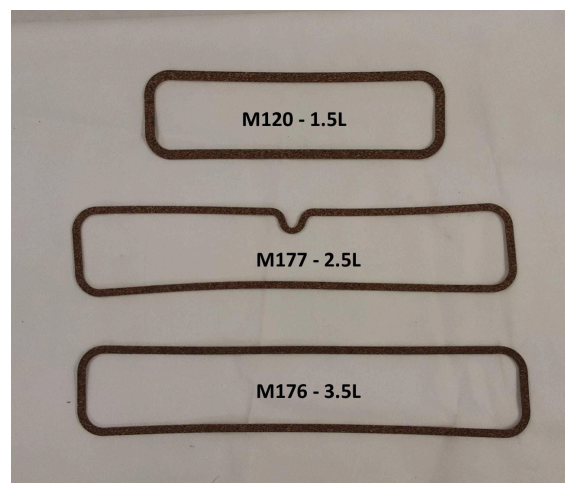
Please note all prices are plus VAT for UK customers

		Part number 50227. Used on engine numbers KB1-KB398	Set of 3
M. 52	C.559, C.462	THRUST WASHERS - please state size: standard, +5, +10 Please note that these are very similar to the original but need some modification to the 'tab' which prevents them from spinning.	£35
M. 61		CORE PLUG SET - 2.5L	£18
M. 62	C.937	CORE PLUG SET - 3.5L	£18
M. 66	C.540	SPRING for timing chain tensioner. 2.5L Engine No. P.18 onwards; 3.5L Engine No. S.26 onwards. Please note: this is an alternative type spring, not as original	£19.25
M. 68	C.990	PETROL TANK FILTER/DRAIN PLUG	£59.25
M. 71	C.937	CORK GASKET between sender unit and fuel tank	£1.05
M. 72	C1617	GASKET/WASHER for petrol tank filler	£1.75
M. 73	46435 C1182	GASKET FOR VALVE TAPPET COVER PLATE Described by Jaguar as ' valve tappet cover washer. 1.5L, 1938 onwards	£8.85
M. 80	SPECIAL ORDER ITEM	BIG END BEARINGS for engines fitted with steel connecting rods 3.5L - standard, +10, +20, +30, +40, +60 <u>State oversize required</u>	£85.50 Car set
M. 80A	SPECIAL ORDER ITEM	BIG END BEARINGS - alloy con rods	Please ask
M. 91	SPECIAL ORDER ITEM	MAIN BEARINGS - 2.5L/3.5L – standard, +10, +20, +30, +60 +40 not currently available <u>State oversize required</u>	£305 Car set
M. 92	C1185	INLET MANIFOLD GASKET 1.5L	£15.50 pair
M. 93	2x C411 1x C638	GASKET SET FOR WATER UPTAKE MANIFOLD 2.5L	£15.50 set
M. 96	3x C411	GASKET SET FOR WATER UPTAKE MANIFOLD 3.5L	£14.75 set
M. 97	C.2562 SPECIAL ORDER ITEM	PISTONS with rings and gudgeon pins - 3.5L - standard, +20, +30, +40, +60 (+10 <u>not</u> available) - <u>State oversize required</u>	£680 Car set
M. 98	SPECIAL ORDER ITEM C2565	PISTONS with rings and gudgeon pins - 2.5L - standard, +20, +30, +40, +60 (+10 <u>not</u> available) <u>State oversize required</u>	£680 Car set
M. 99		VALVE GUIDES (set of 12)	£342 set
M.101	C.531	FAN BELT - 2.5L Engine Nos. P.40 onwards, 3.5L Engine Nos. S.107 onwards	£30.40
M.102	C.337	CYLINDER HEAD GASKET - 3.5L COMPOSITE	£230
M.103	C.649	CYLINDER HEAD GASKET - 2.5L COMPOSITE	£230
M.106		CYLINDER HEAD GASKET SET - 2.5L with composite head gasket. Also suitable for SS 2.5L, 1936/37 (inc SS100)	£335
M.107		CYLINDER HEAD GASKET SET - 3.5L with composite head gasket	£335
M.109		CONVERSION GASKET SET - 2.5 & 3.5L	£95
M.111		OIL FILTER - 2.5L Engine Nos. P.18 onwards, 3.5L Engine Nos. S.26 onwards	£17.25
M.112		OIL FILTER 1.5L (also 2.5/3.5L LHD)	£17.75
M.114	46491 C1186	1.5L COMPOSITE CYLINDER HEAD GASKET	£185
M.118	C.339	STUD securing cylinder head - 3.5L 6 per car 152mm long	£15.20 each
M.119	C.340	STUD securing cylinder head - 3.5L 8 per car 162mm long	£15.20 each
M.120		ROCKER COVER GASKET 1.5L extra thick (4mm)	£21.50
M.121	C.789	WASHER on cylinder head studs - 3.5L 14 per car Set of 7	£9.20 set
M.122	C.2138	CAP NUT for cylinder head studs (cap not supplied) 7 per car	£3.10 each
M.128	FN.107/L	BRASS END TERMINAL for spark plug lead 1.5L 4 per car, 2.5/3.5 6 per car	£1.95 each

Please note all prices are plus VAT for UK customers

M.129		BRASS NUT for spark plug terminal 1.5L 4 per car, 2.5/3.5 6 per car	£1.50 each
M.133	C.1186	BIG END BEARINGS - 1.5L - please state oversize - 1938 onwards	£145 set
M.135		PISTONS, piston rings & gudgeon pins - 1.5L - please state oversize - 1938 onwards (set of 4) Available in STD, +20, +30, +40 & +60	£431.48 set
M.136		VALVES - Inlet - 1.5L -1938 onwards (4 per car)	£25.75 each
M.137		VALVES - exhaust-1.5L -1938 onwards (4 per car)	£26.68 each
M.138	C.1170	VALVE GUIDE - inlet - 1.5L - 1938 onwards Please note these will need to be reduced in length prior to use.	£25.45 each
M.139	C.1154	VALVE GUIDE - exhaust - 1.5L - 1938 onwards	£25.45 each
M.144	C.380	TIMING COVER GASKET - 1.5L 1938 onwards & 2.5/3.5L	£18.50
M.145		LOCK NUT securing valve clearance adjustment screw - 1938 on, incl. SS100 1.5L - 8 per car; 2.5L/3.5L - 12 per car.	£2.15
M.146	C1149	EXHAUST MANIFOLD MIDDLE GASKET (only 1 of the 3 gaskets needed) - 1.5L 1938 on	£13.50

M.147		BALL PIN & LOCK NUT (adjustable) in rockers - for adjusting valve clearance - 1938 onwards, including SS100	£17.85 Pin & nut
M.169	C.385	SUMP/OIL PAN GASKET – 2.5L/3.5L	£29
M.174		EXHAUST VALVES - 3.5L (set of 6)	£248 set
M.175		INLET VALVES - 3.5L (set of 6)	£248 set
M.176	C457	ROCKER COVER GASKET - 3.5L extra thick (4mm)	£23.50
M.177	C810	ROCKER COVER GASKET - 2.5L extra thick (4mm)	£23.50
M.178		FLEXIBLE FUEL PIPE from fuel pump on bulkhead to fuel pipe on carburettor -49	£27.00
M.179		SMALL END BUSHES 1.5L (set of 4) 1938-1949	£65 set
M.179A		SMALL END BUSHES 2.5L (set of 6) 2.5L 1938 - 1951	£97.50 set
M.180		EXHAUST VALVES - 2.5L (set of 6)	£228 set
M.181		INLET VALVES - 2.5L (set of 6)	£228 set
M.182		OIL PUMP - reconditioned original when available. £50 discount for serviceable exchange.	£175
M.185	36411 C382	LOCKING PLATE ON TIMING CHAIN WHEEL ON CAMSHAFT 1.5L - 1936 onwards 2.5 & 3.5L - 1938 onwards	£7.75
M.186	50178 C545	RING LOCKING STARTER JAW For 3.5L engine number S1201 onwards	£10.75



Please note all prices are plus VAT for UK customers

COOLING SYSTEM

CS. 2	636	TOP HOSE - 1.5L 1936 & 1937 (previously CS44)	£26.95
CS. 3	775	TOP HOSE - 2.5L 1937	£24.75
CS. 4	231A	BOTTOM HOSE - 1.5 & 2.5L 1936 & 1937	£29.75
CS. 5	C535/C2 819	BY-PASS HOSE - late 2.5 (& some 3.5L) Mk 4 2.5L eng no P18 onwards (previously CS41)	£15.20
CS. 6	C705	WATER PUMP BEARING front - 1.5, 2.5 & 3.5L	£15.25
CS. 7	C706	WATER PUMP BEARING rear - 1.5, 2.5 & 3.5L	£15.95
CS.18	C714	RUBBER SEALING RING for filler cap - 1.5, 2.5 & 3.5L (previously CS38)	£4.40
CS.19	C384	CARBON GLAND/BUSH for water pump - 1.5, 2.5 & 3.5L (previously CS46)	£39.50
CS.20	C1506	BOLT AND TWO COPPER WASHERS securing banjo on water pump. All 2.5L, and 3.5L chassis numbers 610107 onwards. Not 1.5L	£9.87
CS.25	C1452	TOP HOSE - 1.5L 1946-1948 Chassis numbers 51201-53754, 70001 & subsequent and 410001 & subsequent. (previously CS45)	£29.80
CS.26	39751	BY-PASS HOSE - 1.5 & 2.5L 1936 to 1937 SS100 2.5 & 3.5L 1936 to 1939 (previously CS48)	£18.50
CS.27	3051	TOP HOSE - SS100	£8.45
CS.30		HEATER HOSE KIT - 2.5 & 3.5L (previously CS40)	£85
CS.32	1150B/ C3498	TOP HOSE - 1.5/2.5/3.5L SS & Mk 4 1938 - 1946 Fits 1.5L chassis numbers 50001 - 51200	£21.50
CS.33	C171/C3 499	BOTTOM HOSE - 2.5 & 3.5L 1946 onwards Not 1.5L	£21.95
CS35	C388 & C389	FELT WASHERS FOR WATER PUMP For all 2.5L and 3.5L cars C388 (front) for all 1.5L C389 (rear) for 1.5L with engine numbers K1-K1200, KA1-KA3500 & KB1-KB389. <i>Later 1.5L cars use rear felt washer C1507 which we do not stock.</i>	£8.50 pair

TRANSMISSION

TR. 1	94/GB159 8	GREASE NIPPLE for universal joint - propshaft	£2.00
TR. 2	K5/L/4	UNIVERSAL JOINT/JOURNAL ASSEMBLY with grease nipple 2 per car	£25.40 each
TR. 6	K.2/2/239	FLANGE YOKE on front propshaft assembly and at each end of rear propshaft assembly	£31.90
TR. 7	K.2/3/68	SLEEVE YOKE ASSEMBLY on sliding end of rear propshaft assembly	£38.35

Please note all prices are plus VAT for UK customers

REAR AXLE - HYPOID

RA. 1	2HA-019	PINION OIL SEAL - also fits 1.5L Chassis Nos. 70296 onwards	£8.85
RA. 2	2HA-020	SALISBURY AXLE GASKET for oil seal (1 per car)	£1.78
RA. 5	2HA-023	BEARING at inner end of pinion	£48.20
RA. 6	2HA-022	BEARING at outer end of pinion	£38.15
RA. 8	2HA-038	THRUST WASHER for side gears 2.5/3.5L. 1946 onwards	£16.50 pair
RA. 10	2HA-024	BEARING on differential case	£43.05
RA. 12	2HA-027	INNER OIL SEAL on axle shaft (NOT 1.5L)	£6.40
RA. 13	2HA-032	OUTER OIL SEAL on axle shaft (NOT 1.5L)	£7.25
RA. 14	2HA-025	REAR HUB BEARING (not SS)	£31.70
RA. 25	2HA-005 /2	REAR AXLE HALF SHAFTS – 2.5L and 3.5L	£710.00 pair

EXHAUST

EX. 7	1363	RUBBER MOUNT for silencer - right-angled 1.5L - 3 per car 2.5 & 3.5L - 6 per car	£4.30 each
EX. 9	C.495	GASKET between manifold and downpipe - 1.5L/2.5L/3.5L 1938 onward	£6.27 each
EX 16		EXHAUST MANIFOLD STUDS & NUTS for connecting the manifold to the downpipe. 3/8" UNF x 7/16" These are stepped studs to be used after a new thread has been tapped, following drilling out the remains of the old ones. Sold in packs of 4 studs & 4 nuts. 1.5L - 1 pack per car, 2.5/3.5L - 2 packs per car	£21.50 pack of 4
EX. 18	FN.106K	BRASS NUT securing exhaust pipes to exhaust manifold, 8 per car	£12.45 set
EX. 19	FN.106	BRASS NUT securing exhaust manifold to cylinder head, 12 per car	£16.15 set
EX. 21		EXHAUST MANIFOLD GASKET SET - 3.5L	£35.50
EX. 22		EXHAUST MANIFOLD GASKET SET - 2.5L	£35.50

Complete stainless steel exhaust systems are available to order:

SS100 - £950

Mk 4 2.5 & 3.5L - £1632

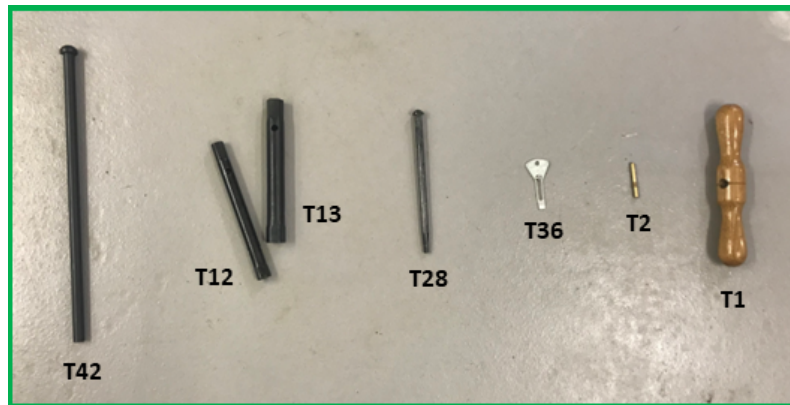
GEARBOX

G. 2	C.1850	NEEDLE ROLLER in 2nd and 3rd speed gears (set of 82)	£44.50 set
G. 6	C.912	OIL SEAL - front end of gearbox, 2.5L & 3.5L only	£5.50
G. 7	C.859	OIL SEAL - rear end of gearbox, 2.5L & 3.5L only	£6.50
G. 26	C1310 36810	OIL SEAL at rear of gearbox SS2, September 1933-36 and 1.5L 1936-1948	£11.50
G. 27	C.924	BEARING in gearbox extension, 2.5L & 3.5L only	£50.25
G. 28	C.902	BEARING in gearbox assembly, 2.5L & 3.5L only	£81.50
G. 29	C.883	ROLLER BEARING for main shaft, 2.5L & 3.5L only	£100.85

(Please check appropriate Parts Catalogue to ensure that a particular item is correct for your 2.5L/3.5L gearbox.)

Please note all prices are plus VAT for UK customers

TOOLS



T. 1	part of C997	HANDLE FOR TYRE PUMP as fitted to Mk 4/5/XK120	£14.50
T. 2	C.993	EXTRACTOR for tyre valve	£9.00
T. 4	C.994	ADJUSTABLE SPANNER - original secondhand	£16.05
T. 7	C.991	OILGUN/GREASE-GUN - original secondhand	£53.80
T. 12	C31	BOX SPANNER - new reproduction 3/16 x 1/4	£38
T. 13	C32	BOX SPANNER - new reproduction 5/16 x 3/8	£38
T. 14	C33	BOX SPANNER - new reproduction - 1.5L only 7/16 x 1/2	£38
T. 17	C31, C32 & C33	BOX SPANNER SET Three box spanners which nest/fit inside each other. New reproduction. 1.5L only had this set of three box spanners.	£144 Set of 3
T. 18	C179	SINGLE ENDED BOX SPANNER for spark plugs	£38
T. 20	2072	TEE KEY - new reproduction	£3.95
T. 28	C. 34	SHORT TOMMY BAR	£12.55
T. 36	C.1002	SCREWDRIVER for distributor - for setting distributor points - remade with permission of Lucas and approved by them	£9.95
T. 41	C1001	TYRE LEVERS - original, used	£19.50 pair
T. 42	C. 30	LONG TOMMY BAR	£17.25

PANELS

P. 45	'52043A'	REPLACEMENT METAL SIDELIGHT HOUSING - to be welded onto front wing - metal pod/housing only	£167.80
-------	----------	---	---------

Please note all prices are plus VAT for UK customers

Terms & Conditions

USED PARTS

Although as good a description as possible will be given of the second-hand items, everyone's idea of condition varies. If there is a known or obvious fault with the part, then the prospective customer will be made aware of it. However, if we supply any second-hand part, be it a single item or a mechanical or mechanised part, or any item that consists of component parts, which is later found to be faulty, unfortunately we would be unable to offer a refund or a replacement part. By the very essence of their nature, second-hand parts are always an unknown quantity, and no guarantee can be given to their condition. It is at the buyer's risk that such items are purchased.

DISCOUNTS

We regret that we cannot give discounts, however large the order or regular the custom. We feel it is fairer to price the parts as competitively as possible to give a fair deal to all our customers, some of whom prefer to order all the parts they need at one time, whilst others prefer to order over a period of time.

LIABILITY

Liability extends only to replacement free of charge, or a refund, in respect of items incorrectly supplied or found to be faulty (not including second-hand items), and notification must be received within 14 days of despatch of goods, so please check your order as soon as you receive it. We regret we cannot give refunds on parts correctly supplied but no longer required.

The return postage on any item which is returned will be paid by the customer – we do not refund return postage (unless we have supplied the incorrect item).

Please be aware that it is not uncommon for a car to have been fitted with non-standard parts at some stage, so if the new part you receive is not the same as the part on your car, do not automatically assume the new part is wrong. Let us know if you have a problem and we will try to sort it out.

BANK FEES

Customers paying by bank transfer must pay the fees charged by their own banks – we pay our own bank fees only. Where there is a short fall due to us being charged by the customer's bank, the customer will be asked to pay the difference.

POSTAGE, INSURANCE & IMPORT CHARGES

We aim to send most parcels out using a tracked service as this makes for a more secure service, tracking numbers are provided to customers on request.

For small or medium sized parcels sent within the UK we use Royal Mail's tracked 24 hour service. For larger parcels, and parcels being sent abroad, we use the courier broker World Options who give us rates with DHL, Fedex, TNT and UPS. These couriers usually deliver parcels within 5-10 days.

Orders of low value goods being sent abroad can be sent using the cheaper service offered by Royal Mail, but this is at the customer's risk. We do not offer refunds or replacements for orders which go missing when sent abroad with Royal Mail.

If a customer specifically requests a next day service this can be looked into, and we are also happy to facilitate customers who wish to arrange their own carrier.

Orders valued at £500 or over will be insured and the cost included in the shipping charge. Customers are asked to let us know if they wish to insure parcels of a lesser value.

Most orders being sent outside of the UK will incur import charges once the parcel reaches customs in the customer's country. The charges vary from country to country and we do not know how much will be charged or when. We have no control over these charges and cannot be held responsible for additional costs to customers due to their government's import policies.

Please note all prices are plus VAT for UK customers